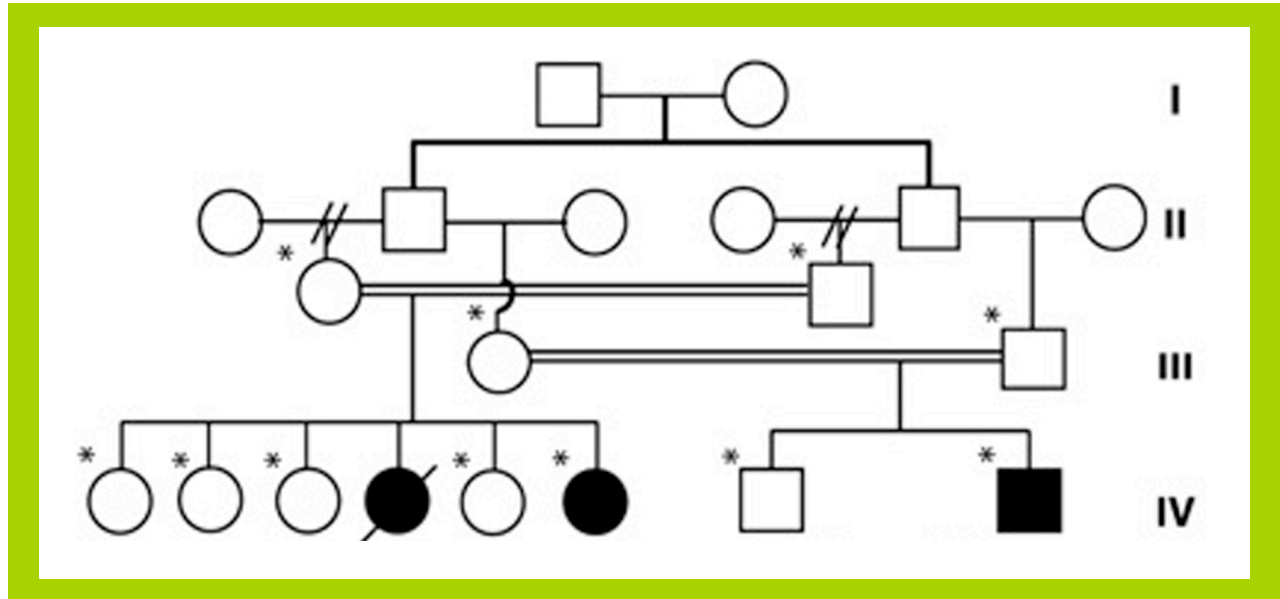


The 10th Seattle Developmental Biology Winter Meeting

Saturday December 6th, 2008

Pelton Auditorium, Fred Hutchinson Cancer Research Center



9:00-10:00 Keynote Address: Joseph Gleeson, HHMI and Dept. of Neurosciences, University of California, San Diego.

“Putting together the human brain: Lessons from disease”

10:00-11:00 Coffee break and poster session (BI-072/076)

11:00-11:30: Hillary McGraw (Raible lab, Dept. of Biological Structure, UW):
Regulation of sensory neuron addition in the zebrafish dorsal root ganglia

11:30-12:00: Maria-Teresa Abreu-Blanco (Parkhurst lab, Division of Basic Science, FHCRC)
Dealing with life’s little traumas: single cell and multicellular wound repair in Drosophila.

12:00-12:30: Michael Boyle (Berg lab, Dept. of Genome Science, UW)
Control in time and space: tramtrack69 prevents location-inappropriate responses to the SIOB transition during Drosophila oogenesis.

12:30-1:00: Christine Queitsch (Queitsch lab, Dept. of Genome Science, UW)
How does evolutionary novelty arise from robust wild-type phenotypes?